

# Regional Planning for Ending the HIV Epidemic

**June 30, 2023**

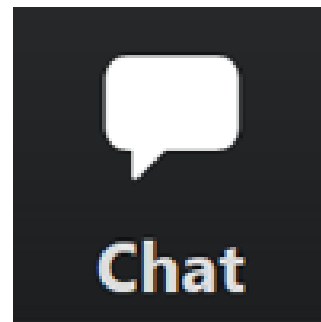
**Elena RosenbergCarlson, MPH**

Project Director | Ending the HIV Epidemic Coordinator

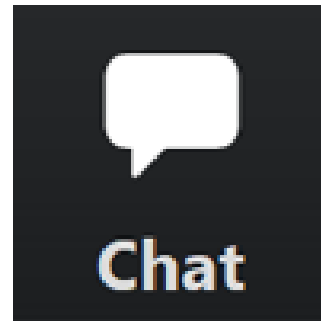
Center for HIV Identification, Prevention, and Treatment Services

University of California, Los Angeles

What is the first word  
that comes to mind  
when you think of  
“collaboration”?



**Why is regional  
collaboration important  
to EHE?**



# Why is regional collaboration important to EHE?

- 90% of all priority clusters of individuals recently diagnosed with HIV in CA span multiple counties
- Resources are limited— offers potential for much greater public health impact compared to a siloed strategy at the same investment level
- Can facilitate scale up of effective, innovative practices to optimize EHE efforts
- A syndemic approach demands collaboration!!



# Initiating a Regional Response to EHE

# Goal

Initiate a regional effort for coordinated EHE response in California by:



Bringing together stakeholders from the eight California EHE priority counties



Assessing key needs, collaborative opportunities, and existing resources



Compiling findings and recommendations to help facilitate a regional EHE response

# Regional Stakeholder Meeting





# Methods

## EHE Regional Stakeholder Meeting

- All-day meeting with 150 community stakeholders from California EHE Phase 1 counties

## Data Collection

- Meeting discussion and evaluations
- Key informant interviews
- Pre/post-meeting surveys
- Draft CDC PS19-1906 EHE plans

## Inductive Thematic Analysis

- Key needs, initial priority topics, and recommended activities for an EHE regional response
- Existing resources to support regional response activities

A REGIONAL RESPONSE TO  
END THE HIV EPIDEMIC IN  
CALIFORNIA: KEY FINDINGS  
AND RECOMMENDATIONS





# Key Areas of Need



# EHE Regional Learning Collaborative



**FUNDING**



**ADDRESSING  
SOCIAL  
DETERMINANTS  
OF HEALTH**



**SERVICE  
PROVIDER  
EDUCATION  
AND  
WORKFORCE  
DEVELOPMENT**



**COMMUNITY  
ENGAGEMENT**



**INTER-COUNTY  
INFORMATION  
SHARING**



# Goals

1



**Facilitate knowledge sharing and spark collaborative opportunities across California's EHE Phase 1 counties**

2



**Build readiness for coordinated action on shared EHE priorities**

# Format



Monthly 90 - minute  
Zoom Webinar  
sessions focused on  
EHE regional priority  
topics



Presentations from 3+ panelists  
implementing  
effective/innovative strategies  
to address priority topics in  
different counties/ contexts  
across the region



Panel discussion/  
Q&A with participants



Sharing of session resources,  
contact info, and opportunities  
to connect

# Learning Collaborative Sessions to Date

Building our coalition to end the HIV epidemic in California

Reaching hardly reached communities

Grassroots approaches to ending the HIV epidemic

Innovative linkage to care approaches

At-home HIV testing

Addressing the intersection of HIV and substance use

Eliminating HIV disparities and inequities in Native communities

Innovations to serve hardly reached communities

Sustaining our HIV workforce

Special Session: HIV and Aging Awareness Day

EHE Phase 1 updates: state and county perspectives

Strategies to engage and serve youth

Providing culturally competent HIV services for the trans community

Strategies and approaches to address HIV stigma

Strategies for community engagement and mobilization

Community infrastructures to help end the HIV epidemic

Strategies to support access to HIV services

Strategies for PrEP engagement and retention

Public health campaign strategies to end the HIV epidemic

Strategies and best practices for mobile service delivery

Strategies and approaches to address viral hepatitis

Addressing the HIV epidemic in Asian and Pacific Islander communities

Strategies to support individuals aging with HIV

Integrated statewide strategic plan and EHE

HIV and incarceration





PANELISTS!

THANK

YOU

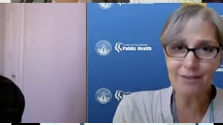
makes PrE medication available at no cost. FIND OUT MORE

RACISM IS A PUBLIC HEALTH CRISIS. RACISM IS A PUBLIC HEALTH CRISIS. RACISM IS A PUBLIC HEALTH CRISIS. RACISM IS A PUBLIC HEALTH CRISIS. RACISM IS A PUBLIC HEALTH CRISIS. RACISM IS A PUBLIC HEALTH CRISIS. RACISM IS A PUBLIC HEALTH CRISIS. RACISM IS A PUBLIC HEALTH CRISIS. RACISM IS A PUBLIC HEALTH CRISIS. RACISM IS A PUBLIC HEALTH CRISIS.

ENDING THE EPIDEMICS

ENDING THE EPIDEMICS

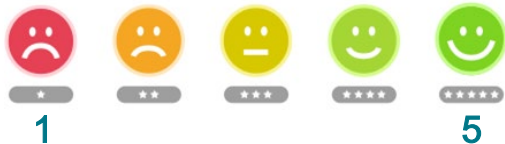
ENDING THE EPIDEMICS





# Evaluation Highlights

- 25 sessions (and counting)
- 100-280 participants joining each session from public health agencies, CBOs, healthcare organizations, and other stakeholder groups working to end the HIV epidemic across the region (and beyond!)
- 1,200+ total unique participants to date
- 506 session evaluations completed + 20 indepth feedback surveys completed (2022)
- **4.74/5 average overall satisfaction rating** across all session evaluations (very dissatisfied to very satisfied)




- Interest in additional opportunities for participant interaction/cross-talk/networking

The programs highlighted were amazing. I was motivated by what I heard to see what we can incorporate in our county [and can] provide funding towards.

[I most like that the learning collaborative is a] platform provided to learn and collaborate with other EHE jurisdictions. Topics are relevant to the work taking place across the state. Opportunities to learn about innovative approaches and models implemented across the state.



[Through participation in the learning collaborative, I have] connected with presenters to learn more about their work. Also connected with other LHJs to learn about implementation insights and share program related documents (SOWs, SOPs, etc.).







**Story from the Field:  
Regional Collaboration to  
Local Action**

# EHE Regional Meeting *Taking strategic action to address substance use in California*

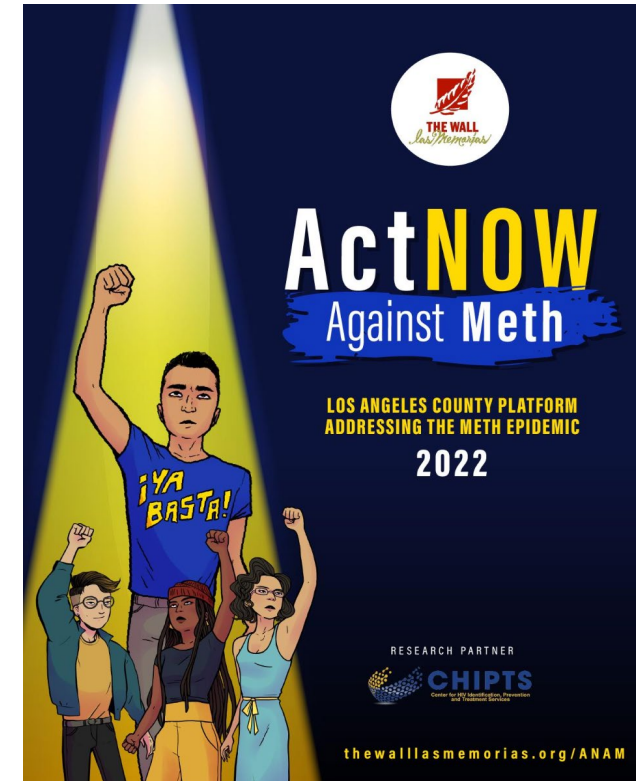
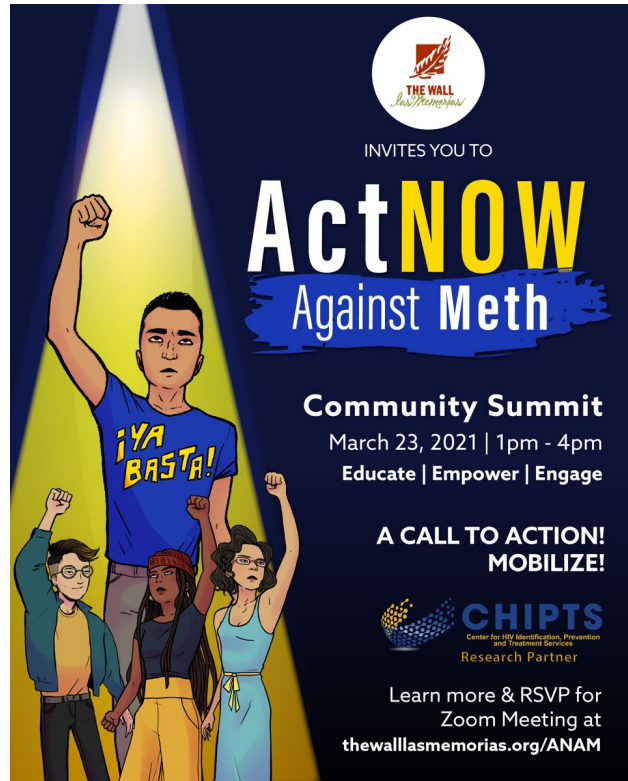
 	
<b>EHE Regional Meeting</b> <i>Taking strategic action to address substance use in California</i>	
<b>Day 1: The Current Landscape – October 20, 2020   9-11 a.m. PST</b>	
9:00 a.m.	<b>Welcome and Opening Remarks</b> <ul style="list-style-type: none"> <li>Dr. Steve Shoptaw, Director, UCLA Center for HIV Identification, Prevention and Treatment Services</li> </ul>
9:05 a.m.	<b>Substance Use in CA: State and Community Perspectives</b> <ul style="list-style-type: none"> <li>Alessandra Ross, Chief, Harm Reduction Unit, California Dept. of Public Health Office of AIDS</li> <li>Jenna Haywood, Associate Director of Community Mobilization, Harm Reduction Coalition</li> </ul> Live Q&A
9:45 a.m.	<b>Strategies to Address Substance Use</b> <ul style="list-style-type: none"> <li><b>Evidence-based interventions</b> <ul style="list-style-type: none"> <li>Dr. David Goodman-Meza, Assistant Professor, Division of Infectious Diseases, UCLA David Geffen School of Medicine</li> </ul> </li> <li><b>Policies</b> <ul style="list-style-type: none"> <li>Laura Thomas, Director of Harm Reduction Policy, San Francisco AIDS Foundation</li> </ul> </li> </ul> Live Q&A
10:25 a.m.	<b>Breakout Sessions: Successes and Challenges in the Field</b> <ul style="list-style-type: none"> <li><b>Meth/stimulant use</b> <ul style="list-style-type: none"> <li>Room 1: Facilitated by Richard Zaldivar, Founder and Executive Director, The Wall Las Memorias Project</li> <li>Room 2: Facilitated by Dr. Jesse Clark, Professor-in-Residence, Division of Infectious Diseases and Dept. of Family Medicine, UCLA David Geffen School of Medicine</li> </ul> </li> <li><b>Opioid use</b> <ul style="list-style-type: none"> <li>Room 3: Facilitated by Dr. David Goodman-Meza, Assistant Professor, Division of Infectious Diseases, UCLA David Geffen School of Medicine</li> </ul> </li> <li><b>Harm reduction</b> <ul style="list-style-type: none"> <li>Room 4: Facilitated by Jessica Smith, Community Mobilization Coordinator, Harm Reduction Coalition</li> <li>Room 5: Facilitated by Dr. Ian Holloway, Director, Southern California HIV/AIDS Policy Research Center</li> </ul> </li> <li><b>Overdose prevention</b> <ul style="list-style-type: none"> <li>Room 6: Facilitated by Dr. Ayako Miyashita Ochoa, Associate Director, Southern California HIV/AIDS Policy Research Center</li> <li>Room 7: Facilitated by Courtney Mulhern-Pearson, Vice President of Policy, San Francisco AIDS Foundation</li> </ul> </li> </ul>
10:55 a.m.	<b>Next Steps and Closing</b> <ul style="list-style-type: none"> <li>Dr. Wayne Steward, Director, Northern California HIV/AIDS Policy Research Center</li> </ul>

 	
<b>EHE Regional Meeting</b> <i>Taking strategic action to address substance use in California</i>	
<b>Day 2: Action Planning – October 27, 2020   9-11 a.m. PST</b>	
9:00 a.m.	<b>Welcome and Recap of Day 1</b> <ul style="list-style-type: none"> <li>Dr. Ian Holloway, Director, Southern California HIV/AIDS Policy Research Center</li> </ul>
9:05 a.m.	<b>Strategies in Action</b> <ul style="list-style-type: none"> <li><b>Overdose prevention</b> <ul style="list-style-type: none"> <li>Dr. Ricky Bluthenthal, Associate Dean for Social Justice and Professor of Preventive Medicine, USC Keck School of Medicine</li> </ul> </li> <li><b>Meth/stimulant use</b> <ul style="list-style-type: none"> <li>Wayne Rafus, PROP for All Coordinator, San Francisco AIDS Foundation</li> </ul> </li> <li><b>Opioid use</b> <ul style="list-style-type: none"> <li>Dr. Andrew Herring, Principal Investigator, California ED-BRIDGE: Emergency Buprenorphine Treatment Project</li> </ul> </li> <li><b>Harm reduction</b> <ul style="list-style-type: none"> <li>Denise Lopez, Harm Reduction Services Manager, HIV Education and Prevention Project of Alameda County</li> </ul> </li> </ul> Live Q&A
10:05 a.m.	<b>Breakout Sessions: Action Planning</b> <ul style="list-style-type: none"> <li><b>Meth/stimulant use</b> <ul style="list-style-type: none"> <li>Room 1: Facilitated by Richard Zaldivar, Founder and Executive Director, The Wall Las Memorias Project</li> <li>Room 2: Facilitated by Dr. Jesse Clark, Professor-in-Residence, Division of Infectious Diseases and Dept. of Family Medicine, UCLA David Geffen School of Medicine</li> </ul> </li> <li><b>Opioid use</b> <ul style="list-style-type: none"> <li>Room 3: Facilitated by Dr. David Goodman-Meza, Assistant Professor, Division of Infectious Diseases, UCLA David Geffen School of Medicine</li> </ul> </li> <li><b>Harm reduction</b> <ul style="list-style-type: none"> <li>Room 4: Facilitated by Jessica Smith, Community Mobilization Coordinator, Harm Reduction Coalition</li> <li>Room 5: Facilitated by Dr. Ian Holloway, Director, Southern California HIV/AIDS Policy Research Center</li> </ul> </li> <li><b>Overdose prevention</b> <ul style="list-style-type: none"> <li>Room 6: Facilitated by Dr. Ayako Miyashita Ochoa, Associate Director, Southern California HIV/AIDS Policy Research Center</li> <li>Room 7: Facilitated by Courtney Mulhern-Pearson, Vice President of Policy, San Francisco AIDS Foundation</li> </ul> </li> </ul>
10:55 a.m.	<b>Next Steps and Closing</b> <ul style="list-style-type: none"> <li>Dr. Steve Shoptaw, Director, UCLA Center for HIV Identification, Prevention and Treatment Services</li> </ul>



## Regional Working Group to Address the Meth Epidemic/HIV

# Local Action to Address Meth Epidemic



Re-Launch of *Act Now Against Meth* Campaign in Los Angeles

Development of Los Angeles County Platform Addressing the Meth Epidemic

# Community Planning and Mobilization to Policy Impact



Press Conference to Launch Platform



Passing of *LA County Board of Supervisors Motion Confronting the Drug Overdose Epidemic* Reflecting Platform Recommendations!!

# Next Steps

# Coming Soon

- ✓ Conducting updated regional needs assessment/asset inventory in partnership with Prevention through Active Community Engagement (PACE) program to inform **EHE Regional Response action planning**
- ❖ Key resource: Center for Sharing Public Health Services (<https://phsharing.org/>)
- ✓ More EHE Regional Learning Collaborative sessions!







# Get Involved!

- ✓ Join EHE Regional Response listserv
- ✓ Participate in needs assessment
- ✓ Request learning collaborative topics to enhance your EHE efforts
- ✓ Volunteer to share your effective/innovative approach on an EHE priority topic
- ✓ Become planning partner
- ✓ Explore collaborative funding opportunities with regional partners to accomplish shared EHE goals



# THANK YOU!



[Erosenberg\\_carlson@mednet.ucla.edu](mailto:Erosenberg_carlson@mednet.ucla.edu)



[https://chipts.ucla.edu/upcoming\\_events/ehe-regional-response/](https://chipts.ucla.edu/upcoming_events/ehe-regional-response/)