

Tenant Led Approach to Overdose Prevention in Supportive Housing

Presented by:

Katie Burk, Facente Consulting (on behalf of SFDPH)

Laura Guzman, National Harm Reduction Coalition

HealthCare for the Homeless Conference

May 12th, 2022



**NATIONAL
HARM REDUCTION
COALITION**



POPULATION HEALTH DIVISION
SAN FRANCISCO DEPARTMENT OF PUBLIC HEALTH

Presentation Outline

- ✓ **Introduction—The San Francisco context (Katie)**
 - San Francisco Homelessness and Supportive Housing snapshot
 - San Francisco Overdose Deaths
 - SRO Project concept
 - COVID pivots at Shelter in Place (SIP) hotels
- ✓ **SRO Project implementation and tenant leadership (Laura)**
- ✓ **Questions and brainstorming (Laura and Katie)**



Homelessness in SF

- PIT count for 2019—8,011 in shelters/on street
- 14% increase over 2017 count

Permanent Supportive Housing in SF

1. Designated for specific populations of PEH (adults, transitional aged youth, seniors, veterans, families)
2. Residents pay 30% of their income
3. Support services provided onsite
4. Funded by a combination of federal, state, and local funds
5. Approximately 70 permanent supportive housing buildings in SF, with about 7700 housing units



SFDPH and NHRC/ DOPE Relationship

- DOPE Project founded in 2001 by Rachel McLean
- NHRC took on the DOPE Project around 2005
 - SFDPH has continuously funded the consistently-growing program since that time
- The DOPE Project continues to lead community-based OD prevention efforts in SF
 - 18,000 doses of naloxone distributed in 2021 to PWUD and their providers

KNOW OVERDOSE

Change it up

Injecting drugs carries the highest risk of overdose, so try smoking or snorting instead.



Use naloxone (Narcan®) to save lives: Naloxone is a medicine that reverses overdose from opioids including heroin, prescription pain pills and fentanyl.

Get free naloxone (Narcan®) + overdose prevention training: Injectable naloxone is available at local syringe access programs. Nasal spray naloxone is available at CBHS Pharmacy, 1380 Howard St.



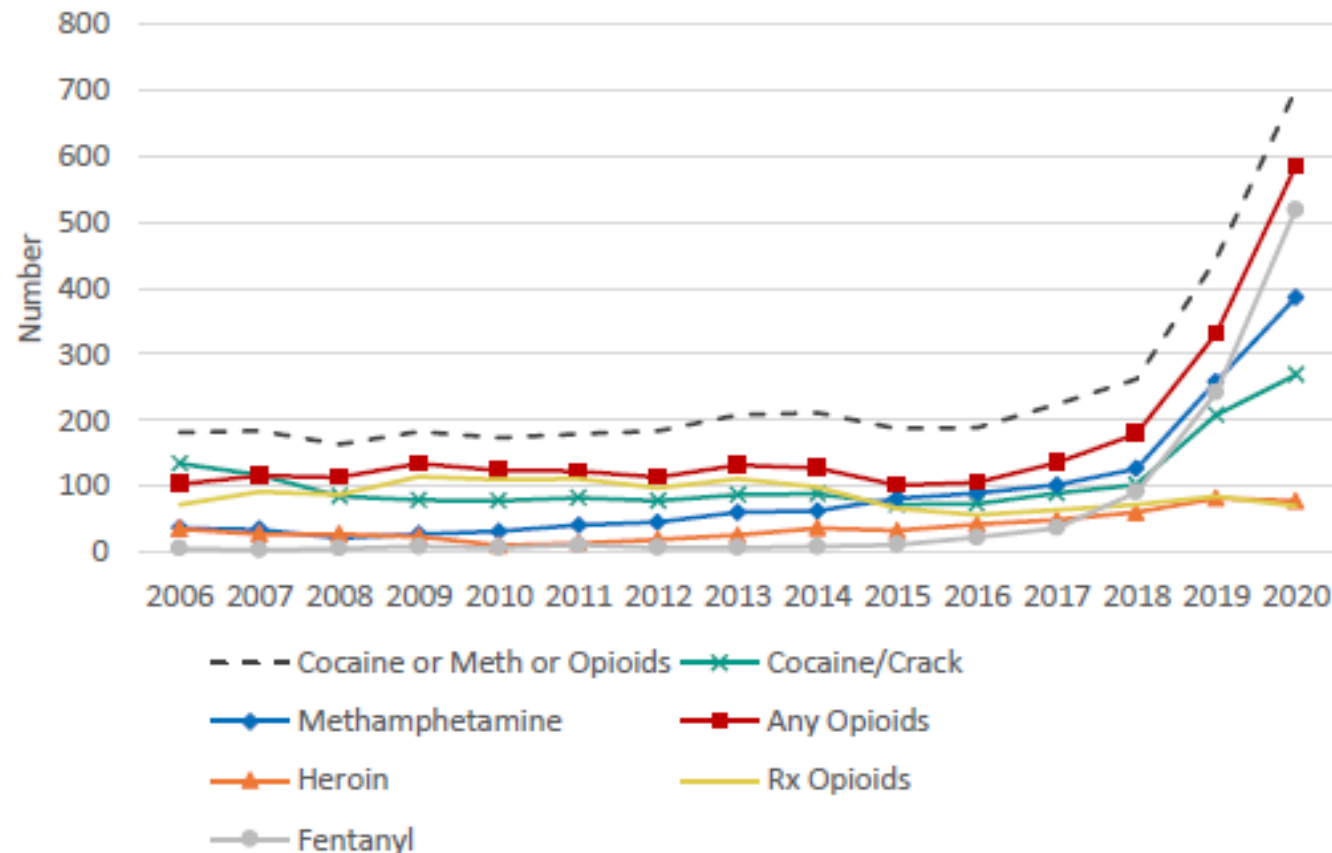
harmreduction.org/dope



**LET'S TAKE CARE OF EACH OTHER,
SAN FRANCISCO**

Overdose Deaths in San Francisco, 2006-2020

Figure 1: Number of Opioid, Cocaine, and Methamphetamine Overdose Deaths by Non-Mutually Exclusive Substance Category in CCSF, 2006–2020

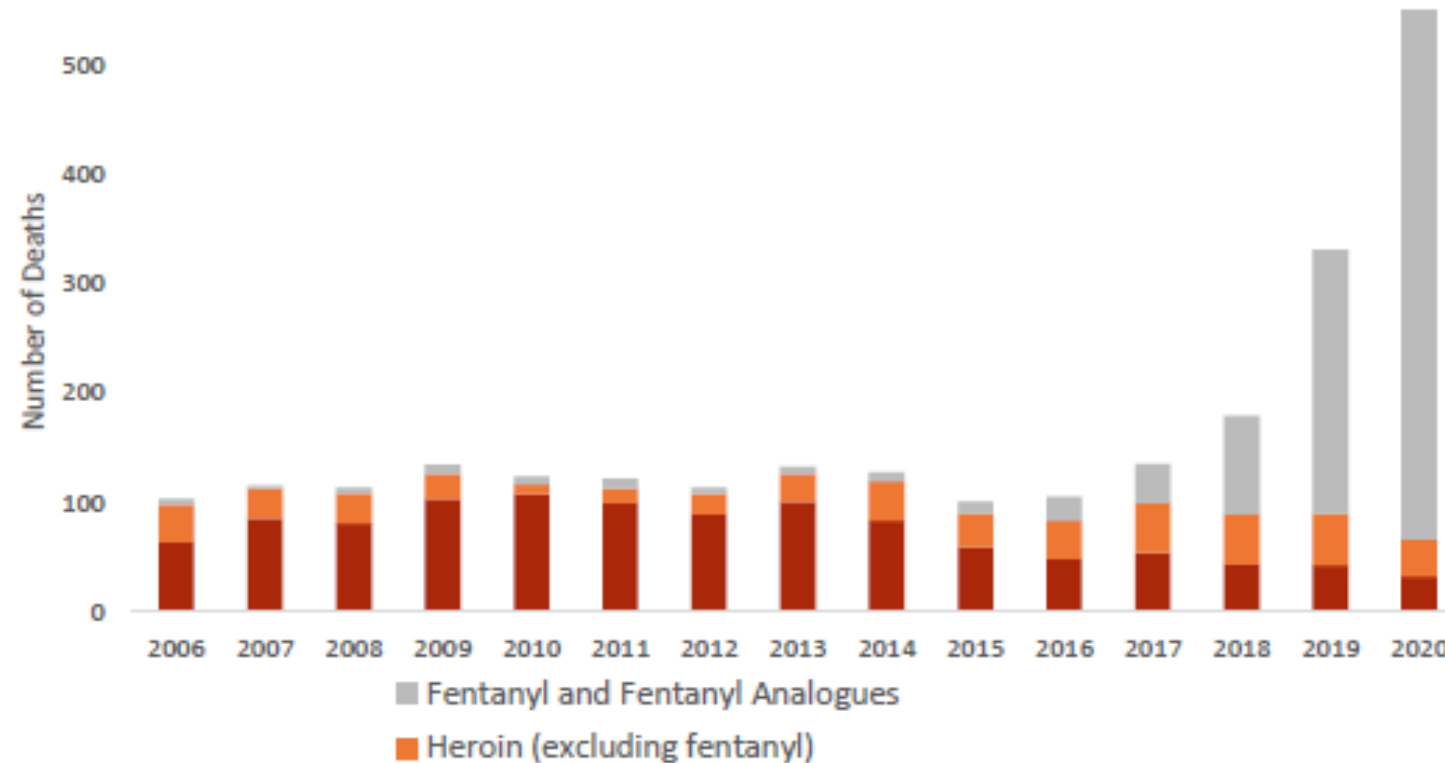


From 2006 to 2017 accidental overdose death numbers were consistently low, thanks in large part to San Francisco's early commitment to community-based naloxone distribution.

There was an average of less than 200 total overdose deaths per year during this time period.

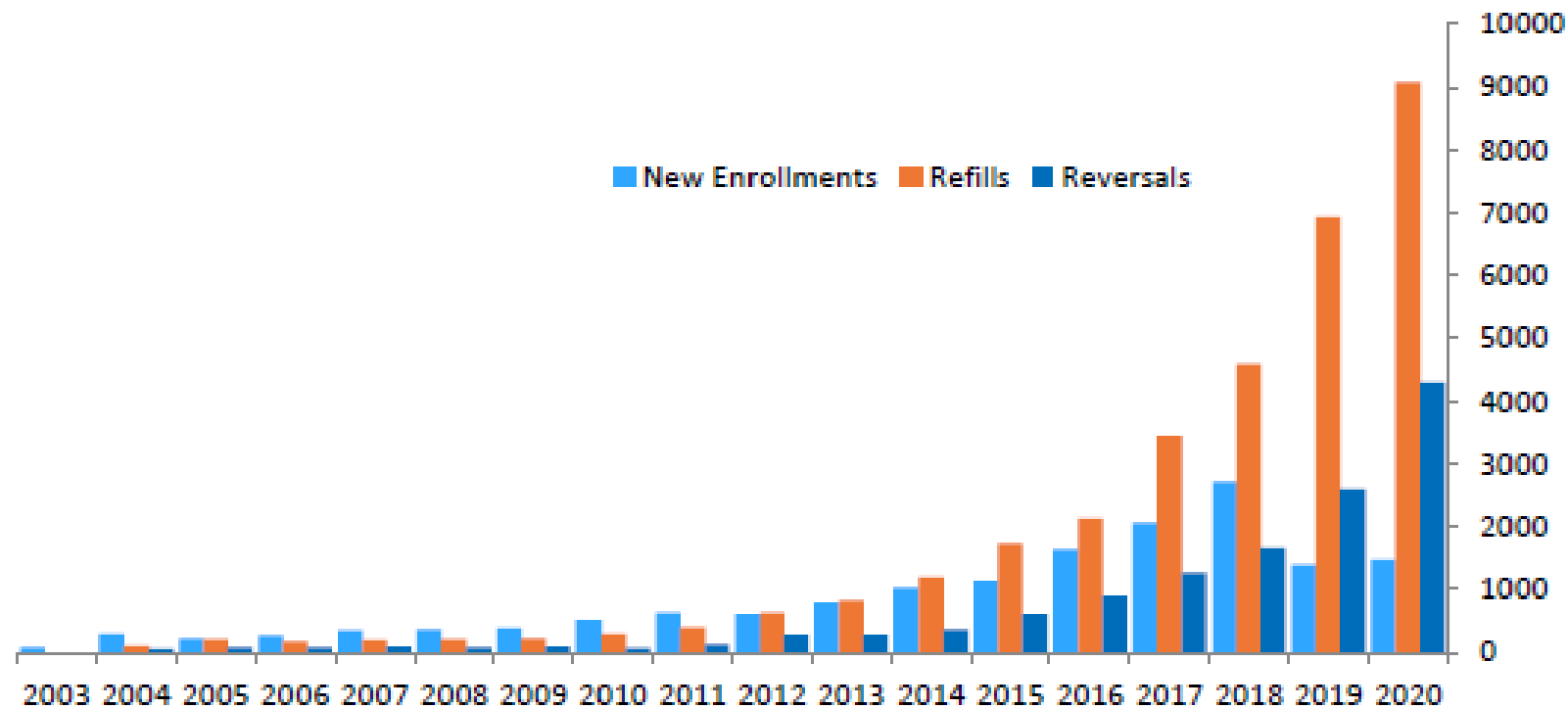
Increasing presence of fentanyl in drug supply driving OD deaths

Figure 6: Number of Opioid Overdose Deaths by Mutually Exclusive Opioid Type in CCSF, 2006–2020



DOPE Project Narcan: Distribution and Reversals Reported, 2006-2021

Figure 81: Naloxone Enrollments, Refills, and Reversal Reports to the Drug Overdose Prevention and Education Project, 2003–2020



More than
9,200 overdose
reversals reported
in 2021!

*This is an
undercount as it
fails to include
naloxone
distributed by
other sources
(pharmacies, DPH
primary care,
clinics, etc.)*

Overdose and Single Room Occupancy Hotels (SROs)

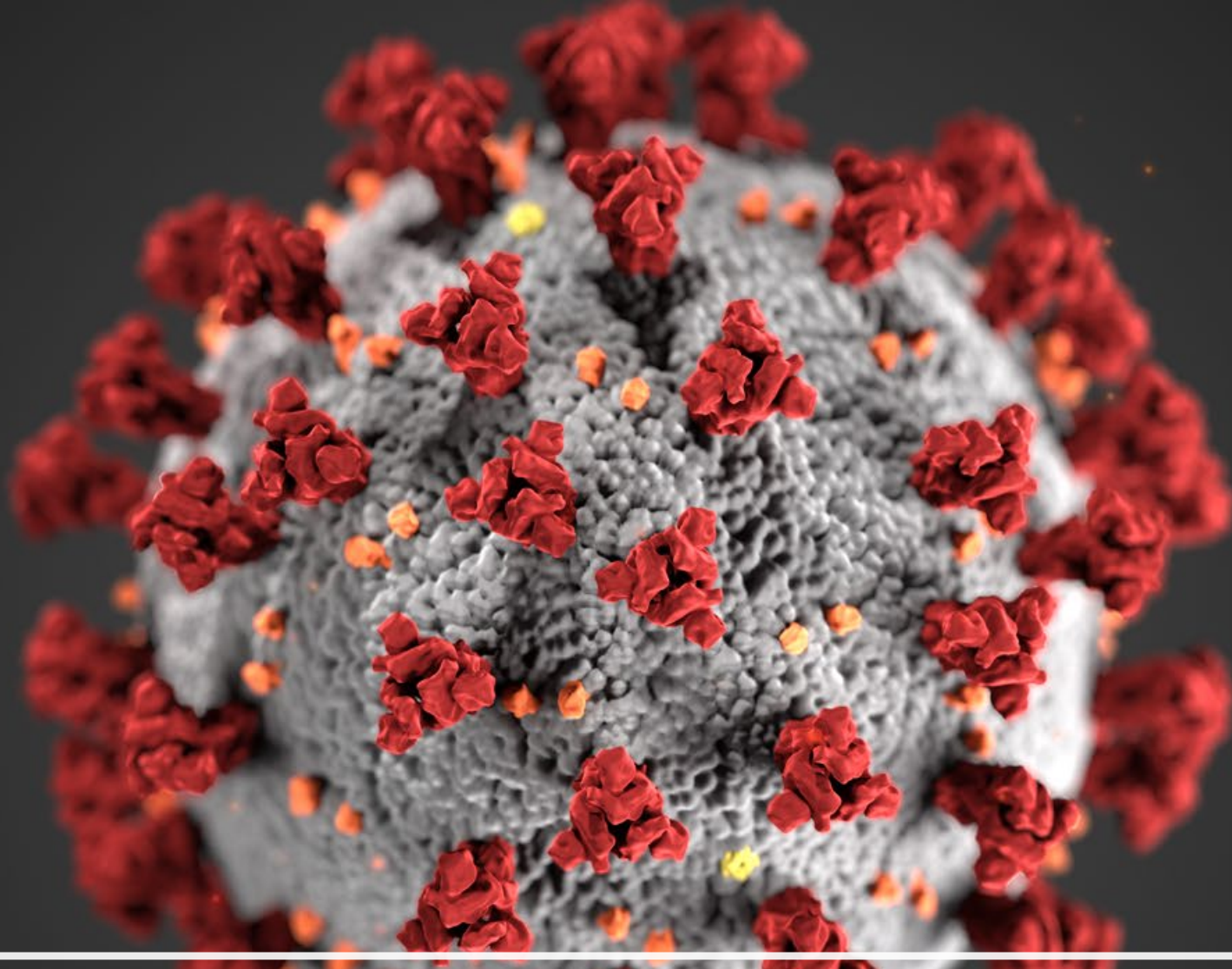
- Estimates of the numbers of people living in SROs in SF range between 20,000 and 30,000
- Study published in 2019 found that from 2010-2017:
 - SRO residents were 19x more likely to die from accidental overdose death than general SF population
 - SRO residents were also more likely to die at home (86% of SRO residents died at home compared to 64% of non-SRO residents)
- Recommendations from study:
 - Need for targeted interventions directed toward SRO hotel residents

Rowe C, Riley E, Eagen K, Zevin B, Coffin PO. Drug overdose mortality among residents of single room occupancy buildings in San Francisco, California, 2010-2017. Drug and Alcohol Dependence. 2019 Nov 1;204:107571. doi: 10.1016/j.drugalcdep.2019.107571. PMID: 31581024.



Creation of SRO Project

- Loosely modeled after Vancouver TORO (Tenant Overdose Response Organizers) Project
- SFDPH received funding from CDPH to implement a tenant-led approach to overdose prevention in San Francisco SRO Hotels
 - SFDPH subcontracted with DOPE Project
 - Grant period: 2/2020-1/2022
 - DOPE Project secured city funding to continue project beyond CDPH grant
- Focused on supportive housing SROs
 - Supportive Housing SRO residents are particularly vulnerable (dual diagnosis of substance use disorder and mental health, live alone)



And then....

April 2020: COVID Outbreak at SF Shelter

- 70 residents tested COVID-19 positive at MSC South (4/10/20)
- Guardian reported on 4/15/20 that the outbreak had grown to 90 residents and staff
- Had already adjusted shelter occupancy from 340-person capacity to 101-person capacity
- Prompted move toward housing people experiencing homelessness in Shelter-in-Place hotels



London N. Breed
Mayor

Department of Emergency Management
1011 Turk Street, San Francisco, CA 94102
Phone: (415) 558-3800 | Fax: (415) 558-3843



Mary Ellen Carroll
Executive Director

IMMEDIATE RELEASE

April 10, 2020

Contact: Department of Emergency Management
415-558-2712, dempres@sfgov.org

*** Press Release ***

Coronavirus (COVID-19) Outbreak at MSC South Homeless Shelter April 10, 2020

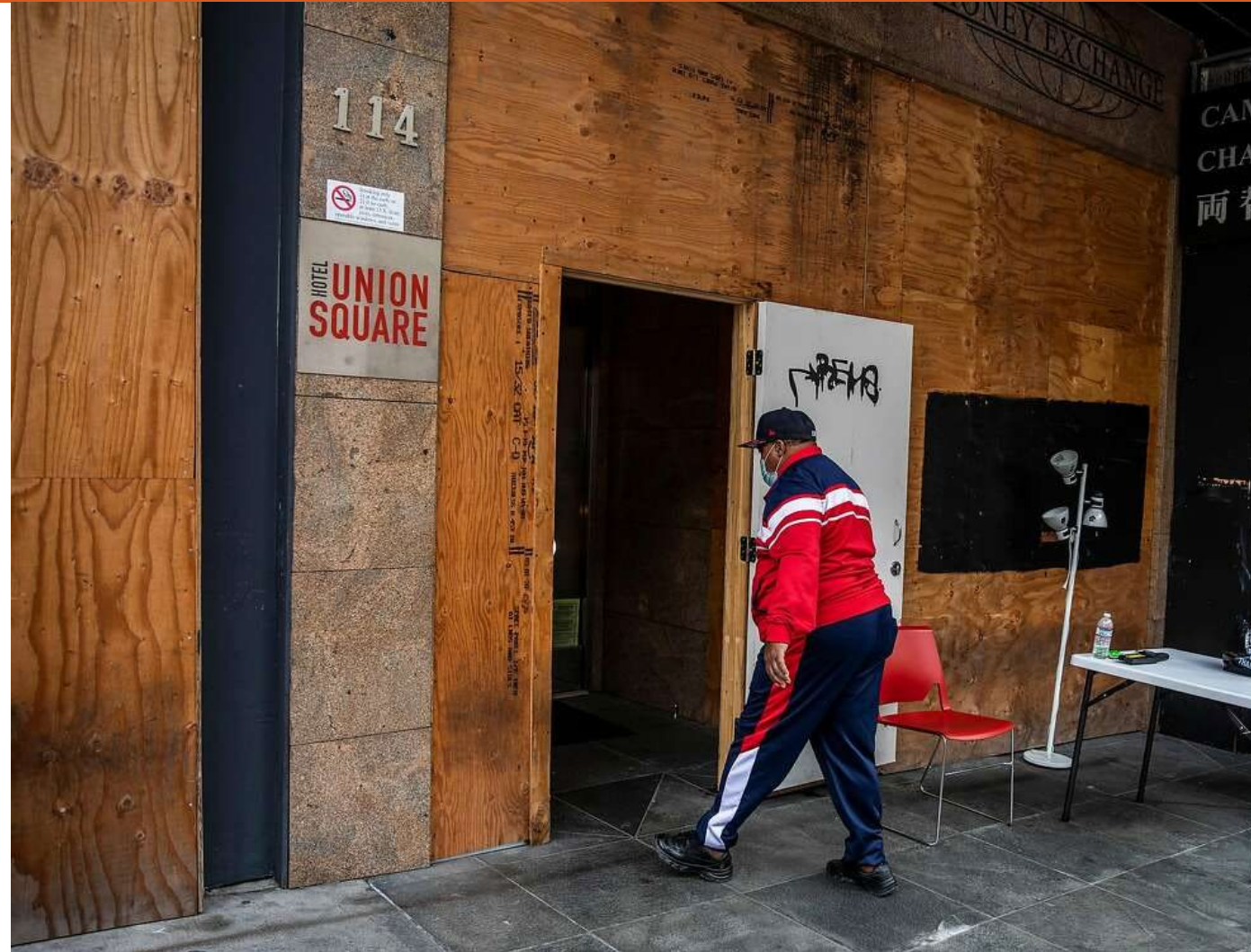
San Francisco, CA – Today, San Francisco announced an outbreak at the Multi-Service Center South (MSC South), a City funded adult shelter operated by St. Vincent De Paul Society, and the implementation of their emergency response plans for the facility. As of this morning, 68 guests and two staff have tested positive for COVID-19. The City is continuing to test all guests and staff for COVID-19. As of Friday morning, out of the 144 tests administered, 71 people tested negative and 3 are still pending.

The San Francisco Department of Public Health (DPH) will be converting the MSC South shelter into a COVID-19 Recovery Center to serve COVID-19 positive shelter guests. Medical personnel, including doctors and nurses, have been assigned to the site.

As of Friday morning, as part of the City's plan to reduce COVID-19 risk, 73 guests had been moved from the facility leaving only 103 guests remaining in the 340-person-capacity shelter. Other early City actions taken to mitigate COVID-19 exposure risk at congregate facilities included:

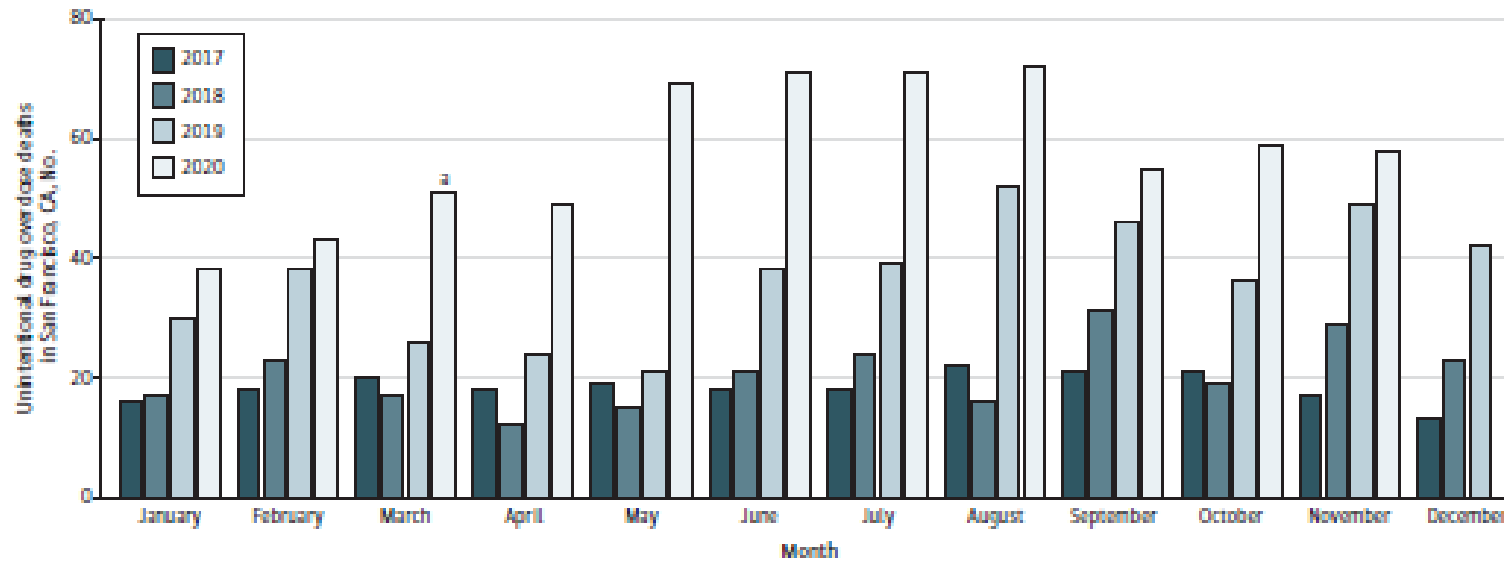
Shelter In Place (SIP) Hotel

- First Shelter in Place (SIP) Hotels opened in April 2020
- Provide temporary non-congregate shelter for PEH who were vulnerable to COVID-19
- Provided 2,288 rooms across 25 sites
- Served over 3000 guests



Overdose Mortality in SF Increased During Initial Months of Shelter in Place Order

Figure. Unintentional Drug Overdose Deaths In San Francisco, California, by Month and Year, January 2017 to November 2020



^a The shelter-in-place order went into effect on March 17, 2020.

50% increase in OD deaths in SF in 8.5 months following SIP order in comparison to 8.5 months prior

Between March 14 and Nov 30 2020, there were 537 OD deaths, and 169 COVID deaths

of fatal ODs among people experiencing homelessness during COVID 19 **doubled**

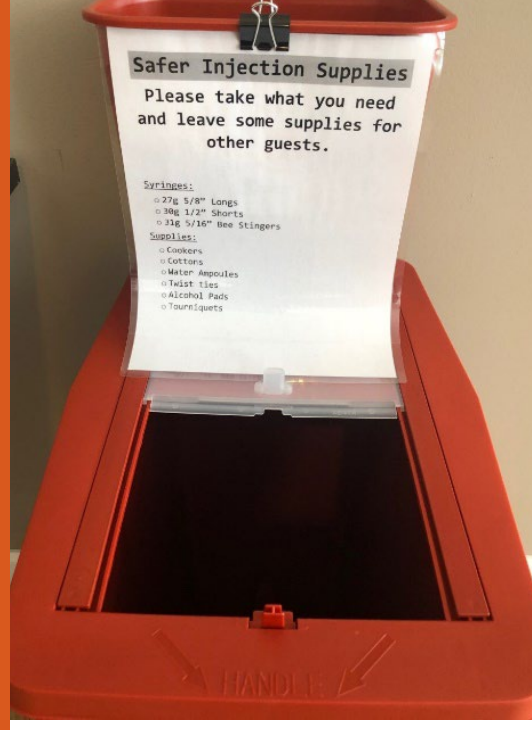
SIP OD Prevention Protocols

- Collaboration between:
 - SF Department of Public Health,
 - National Harm Reduction Coalition,
 - San Francisco AIDS Foundation
- Included OD response policy
- Included info about legal liability
- Unattended stations where guests could access harm reduction supplies 24/7
- Sharps containers in each room

Photo Credit: Eileen Loughran



SIP Hotel Harm Reduction Liasion Role



SIP Harm Reduction Liaison Role

- Offered dozens of harm reduction and OD trainings to SIP hotel staff over 15 months
- Tabled at SIP hotels to hand out supplies and provide information and referrals to residents
- Challenges capturing reporting reversal data
 - Anecdotal reports suggest staff at each site were reversing approx. 10 overdoses onsite/month,
 - Reversing another 40 overdoses/month in the surrounding area

Photo Credit: Rachel Cabugao



SFDPH: Overall Goals and Strategies

Goals

Reduced yearly increases in total drug overdose deaths

Reduced disparity in yearly mortality rate

Strategies

Increase # of individuals with buprenorphine prescriptions

Increase percent of individuals who engage in care within 30 days of acute care discharge

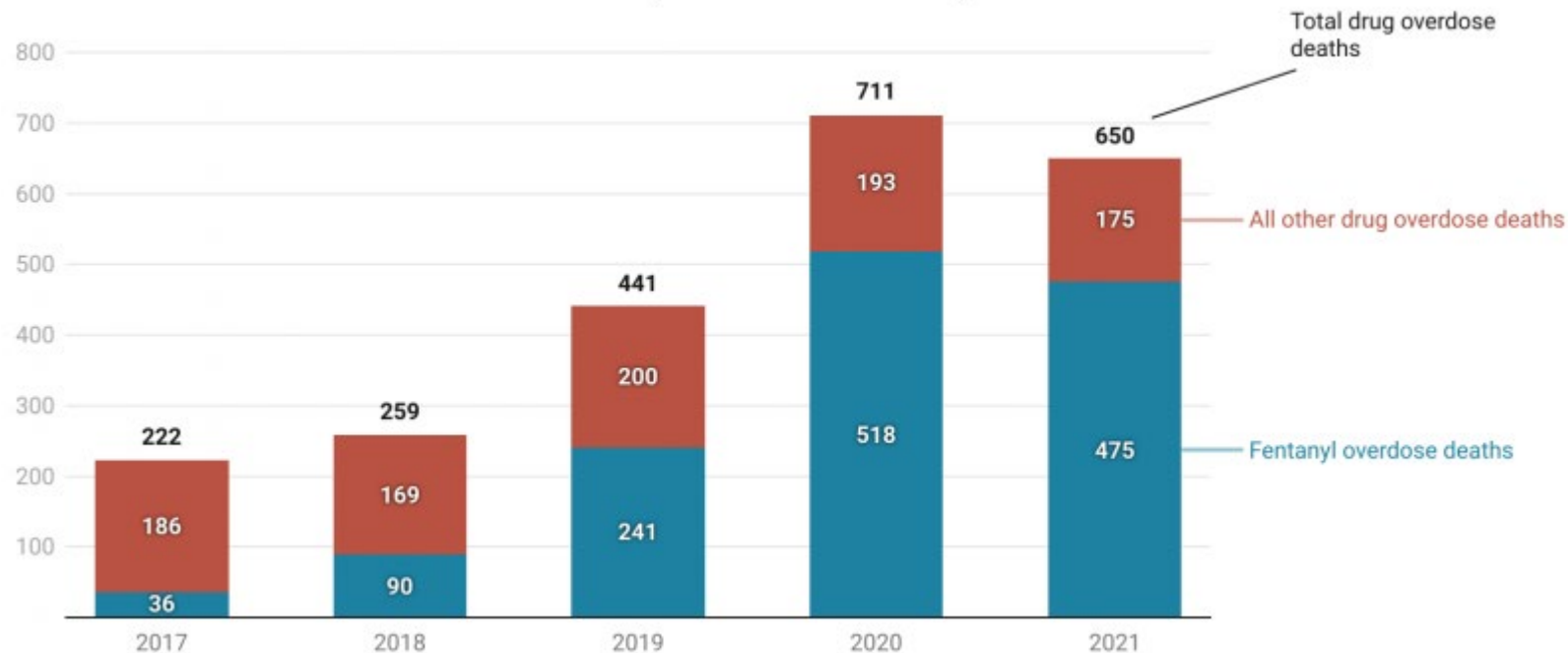
Increase # of individuals who initiate contingency management

Increase % of individuals on medication for OUD for 6+ months

Increase number of naloxone doses supplied annually throughout SF

SF Overdoses in 2021: A leveling off?

SF Overdose Deaths from Fentanyl and Other Drugs



“Maybe we can’t make fentanyl use safe. Let’s say you make it twice as safe. It’s still just so deadly it just overwhelms the capacity of what we know how to do.”

--Keith Humphreys, MD,
Stanford School of
Medicine